



Changes to Residential Solid Waste Collection

Leawood Homes Association Meeting
February 3, 2011

Julie Coon
Johnson County Environmental Department

Changes to Waste Collection by January 2012

- All Haulers operating in the County will have to obtain a permit from the County .
 - Separate **yard waste** collection for composting only
 - Must include **unlimited recycling** in the base rate structure
 - Must Provide **Pay-As-You-Throw**



How are Changes Implemented?

- 55 HOAs in Leawood.
- Each HOA contracts for their waste and recycling services.
- 10 licensed haulers in the County.
- Each HOA has flexibility to work with their hauler to determine the nuances that best fit their community.



Yard Waste Options for Residents

- Subscribe to a collection service to pick up yard waste for composting.
- Mulch grass clippings and leaves back on the lawn with a mulching mower.
- Start a backyard compost pile and use the product on your gardens.
- Use a drop-off facility



Definition of Yard Waste:
Leaves, grass, brush and limbs.



Curbside Yard Waste Collection

- Twigs bundled appropriately with specifications of your hauler.
- Leaves and grass containerized appropriately as required by your hauler.
- Regulations do not specify volume limits but may be implemented by your hauler.
- Minimal amounts are acceptable in the trash.



Yard Waste 39 years later

- Green grass was found in the landfill thirty-nine years later.



Johnson County Backyard Composting Program

- Host/attend a free class on backyard composting in the coming year.
- Purchase a backyard composting bin for a discounted cost.



Unlimited Recycling

- All residents/contracts must have unlimited curbside recycling included in their base rate.
- Container sizes may vary and are up to your HOA and Hauler.



What can go in your bin?



Pay As You Throw

- Contracts will specify a max. volume for trash in the base rate (no more than 95 gal).
- You may use your own bin or one provided by your hauler OR equivalent volume of bags



Pay As You Throw

- Any waste generated by a resident beyond the weekly allowable volume must pay extra:
 - Purchase of a sticker/tag from hauler or HOA*
 - Individual households may subscribe to a higher weekly volume and pay extra*
 - Bulky items may be collected as part of a contract.*
- *Negotiated by your HAO contract.



Pay As You Throw

- Over 7,000 U.S. communities have implemented volume-based rate structures including KCMO, Mission, Prairie Village and Westwood.
- Illegal dumping has not shown to be a problem in other cities with PAYT.
- Illegal dumping should be addressed in the same manner it is now. Contact your City.



JoCo Outreach Efforts and Resources

- Monthly section, Go Green, in Sun newspaper
- Two videos on our website: Recycling and Composting
- Monthly Eco Newsletter
- Hundreds of presentations to schools, churches, HOAs and community groups



Ripple Glass Recycling

- 15 Ripple Glass Recycling Drop-offs in the County.
- Funded by ARRA grant money.

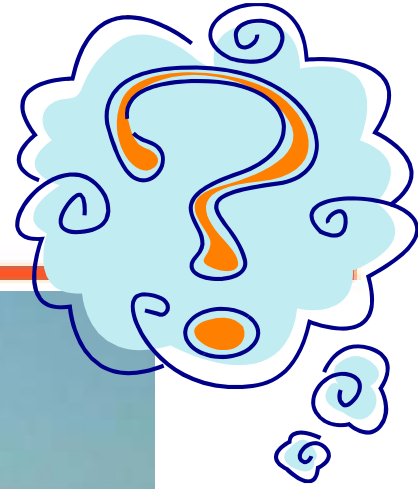


You will make a difference

- HOAs work with Haulers to provide the best service for your community.
- Recycling and composting diverts material from landfills and protects natural resources.



Thank You!



Julie Coon

Julie.Coon@jocogov.org

913-715-6900



JoCoRecycles.org

